



ScaleIT Weighing System

Reports R5

Adriana Epure
8/22/2008

Contents

Reports	3
1. Web reports vs. windows reports	3
2. Web reports	3
6.3 Windows Reports	4
6.2.1 Select sorting type	5
6.2.2 Filters	5
6.2.3 Creating a custom report	6

Reports

1. Web reports vs. windows reports

It is important to remember you that our application can provide 2 types of reports – one is web-based and the other one is Windows based. All you have to do is to remove the report URL from Settings ->Parameters -> Application -> Report URL and save the changes. Next time when you will press the button Reports the other reports will appear.

Which one is better !? Depends on your needs :

- ✓ If the computer your are using is a stand-alone station with no connection to a network you should use Windows Reports. They are fast, realiable and can provide you a wider range of options widthout having to install Internet Information Server .
- ✓ If you need a special report, with the new type of reports you can create one by yourself with no need of programming knowledges.
- ✓

2. Web reports

Please have in mind that the report URL from Settings ->Parameters -> Application -> Report URL must be `http://localhost/scaleit reporting` .

For the web reports all you have to do is to select the report you need, set the filters and press the button **Show** .

Parameters

Application Company Department User Machine

Device manager

Device manager 127.0.0.1:8001

Media path

General

Add when not exist Yes

Automatically update False

Currency kr, 2

Language Romana

Log type LogOnlyErrors

Read only reference No

Reports URL http://localhost/scaleit reporting

Units Kilogram, Kilogram, 0

Update URL ftp://193.238.58.88/AppUpdates.

Printing

Printer activated Yes

Reports URL

Web site reports address

Discard Save

3. Windows Reports

The 'Reports' window is a complex form with multiple filter sections. The 'Date and time' section includes 'From' and 'To' date pickers. The 'Company and department' section includes 'Company' and 'Department' dropdowns. The 'Vehicle' section includes 'Vehicle' and 'Vehicle group' dropdowns. The 'Customer' section includes 'Customer' and 'Group' dropdowns. The 'Supplier' section includes 'Supplier' and 'Group' dropdowns. The 'Haulier' section includes 'Haulier' and 'Group' dropdowns. The 'Project' section includes 'Project' and 'Subproject' dropdowns. The 'Stock Points' section includes 'From place' and 'To place' dropdowns. The 'Product' section includes 'Product' and 'Group' dropdowns. The 'Weighing details' section includes 'Storage' and 'Direction' dropdowns. The 'Advanced' section includes 'Card' dropdown, 'Tare weight' checkbox, and 'Manual' checkbox. The 'Users' section includes 'User' dropdown. The main area is a large, empty gray rectangle. The bottom toolbar includes various icons and a zoom slider set to 100%.

Windows reports are a more advanced type of report as the user has the possibility to create its own customized reports.

The old functionalities from the web reports were kept so that if you want to show only some of the reports, all you have to do is to press the arrow next to the the button Show and select the reports you are interested in.

The 'Show' dropdown menu is open, displaying a list of report types. Each item has a checked checkbox to its left. The items are: Cards, Clients, Crushed Stone Base Material, Detailed Weighings Grouped On Project And Subproject, Fakturaunderlag, NO_Weighings Grouped On Client, NO_Weighings Grouped On Client And Product, NO_Weighings Grouped On Product, NO_Weighings Grouped On Project, NO_Weighings Grouped On Vehicle, NO_Weighings List, NO_Weighings List Summed On Client, NO_Weighings List Summed On Product, NO_Weighings List Summed On Project, NO_Weighings List Summed On Vehicle, Products, Storages, Transports List, Vehicles, Weighings Payers, and Weighings Products.

3.1 Select sorting type

Pressing the Show button after selecting the report will open a new window that will ask you to sort the weighing data .

The box called **Columns** will contain the sorting types on the report. The 2 arrows button oriented left have the task of getting all the columns from the panel in the right side in the left side, in the Columns panel . Pressing the button with the arrows right oriented, will empty the **Columns** panel . You can also select one of the sorting types from the right panel and press the left oriented button to put that type of sorting in the Columns panel.

In the end you have two other types of sorting : Ascending and Descending. The default sorting type is Ascending.

Pressing the button OK will display the sorted report.



3.2 Filters

We know that a large database can be hard and time wasting when you want to find a particular product or client or vehicle etc...so we have prepared for you a second filter (placed in line with the Advanced menu). It is important for the user to know that he can remove those filters by pressing the arrow pointed down and uncheck the unwanted filters. By default, even if you have removed all the filters (none of the filters are selected), the application will display the filter by vehicle.



The button **Clear filter** can be very usefull when you have filled in all the filters and you want to do another filtering – pressing the button will remove all the content in the fields.

The Advanced filter can show you by clicking the check box **Manual** the weighins entered manually by the operator.

Another important and usefull detail for the **Advanced filter** is the check box **Tare weight** . If checked it will show you the vehicles which have a tare weight acquired.

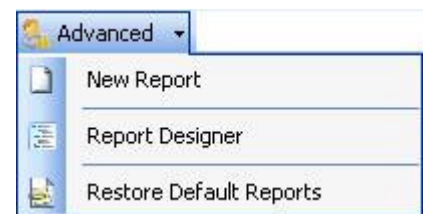
The screenshot displays a complex filter interface with multiple sections for data selection:

- Date and time:** Includes 'From' and 'To' date pickers (set to 19/08/2008) and time pickers (set to 10:57).
- Company and department:** Fields for 'Company' and 'Department' with dropdown menus.
- Vehicle:** Fields for 'Vehicle' and 'Vehicle group' with dropdown menus.
- Customer:** Fields for 'Customer' and 'Group' with dropdown menus.
- Supplier:** Fields for 'Supplier' and 'Group' with dropdown menus.
- Haulier:** Fields for 'Haulier' and 'Group' with dropdown menus.
- Project:** Fields for 'Project' and 'Subproject' with dropdown menus.
- Stock Points:** Fields for 'From place' and 'To place' with dropdown menus.
- Product:** Fields for 'Product' and 'Group' with dropdown menus.
- Weighing details:** Fields for 'Storage' and 'Direction' with dropdown menus.
- Advanced:** Includes a 'Card' dropdown and a 'Tare weight' section with two checkboxes: 'Manual' (checked) and 'Manual' (unchecked).
- Users:** A field for 'User' with a dropdown menu.

3.3 Creating a custom report

Windows reports are very easy to customize do that they can fulfill even the most exigent tasks.

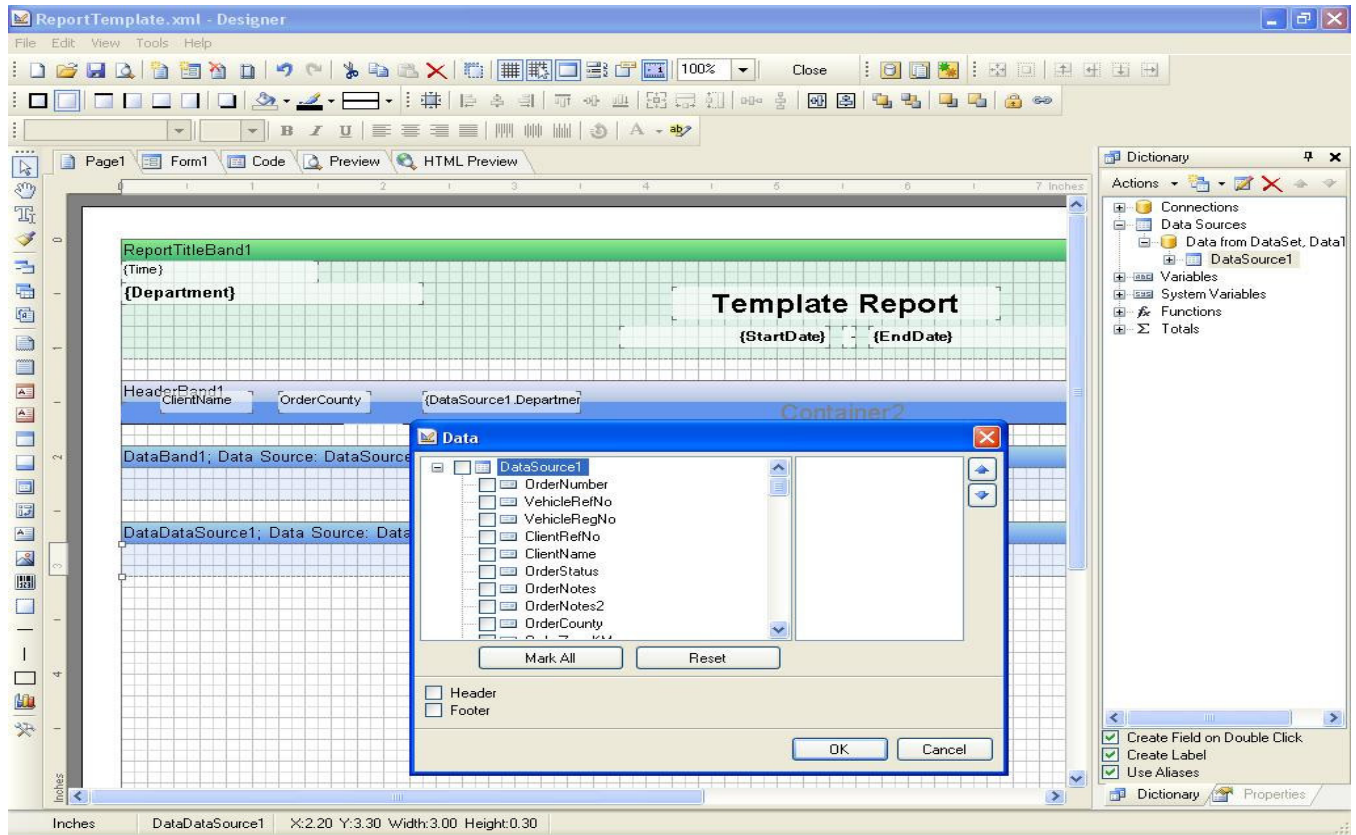
ScaleIT Windows Reporting comes with a set of 21 default reports, but in case you need a different kind of report from our application, you have 2 options : modify an existing report one or create a new one .



3.3.1 Creating a report based on a template with Report designer

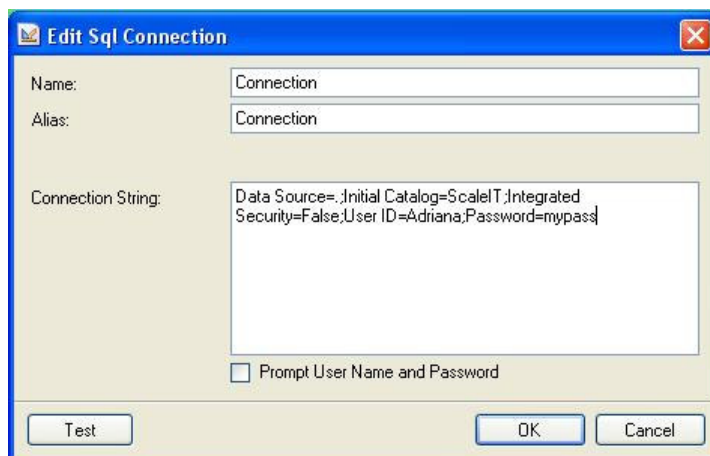
If you click **Report Designer** without having any report selected, the application will open a **Template Report** where all you have to do is drag and drop or double click the data sources items required from **Dictionary -> Data Sources -> Data from DataSet, DataTables -> DataSource1** save the report and close the designer. Another tricky method would be to select the DataSource1 and drag and drop it on the report page – it will open you a new window where you will be able to select the data you want to view on the report. (See the picture below.)

After selecting the datasources, save the report and close the designer. You will find your new report in the report drop down .



3.3.2 Creating a new empty report with Report Designer

You can create a new report by pressing the **New report** button from the **Advanced** menu and an empty report designer will open. In order to have data to drag and drop on the report you have to open first a connection. Go to the Dictionary and select there New Item –New Connection . Select there the type of the connection you are using (in this case Sql Connection) and press the button OK . A new window will appear and you will have to give the connection string to the database. So, for my database called **ScaleIT** and having **the word mypass as password** I wil have the following connection string :



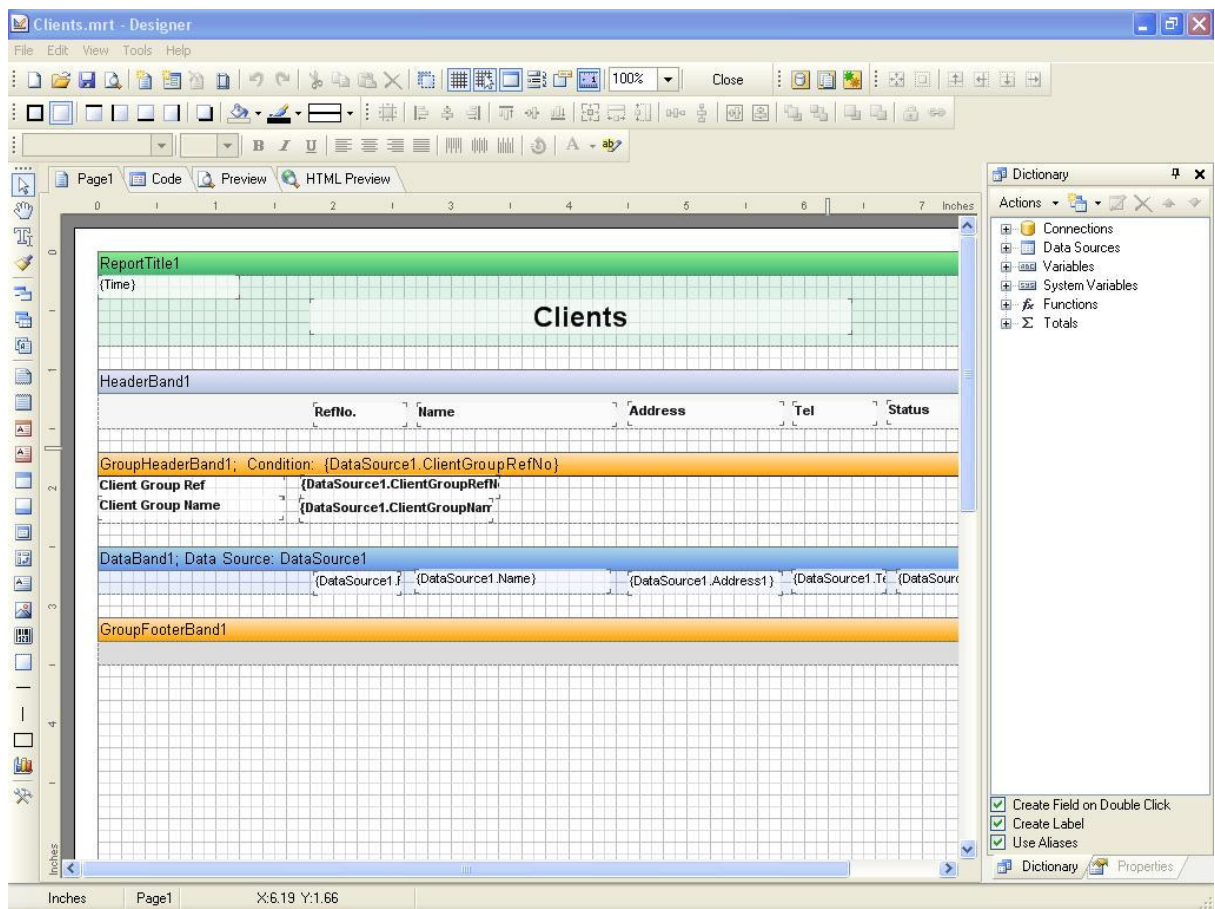
After you have created a connection to the database you also have to create a new Data Source from New Item -> New DataSource.

3.3.3 Modify an existing report



In order to modify an existing report you have to select the report from the drop-down box **Report**, and you go to advanced -> Report Designer. The report designer will open now and you will be able to delete or to add new functionalities to the report.

In the picture below you have the Clients report opened in design mode. You can now open Data Sources add the data you need and save the report.



In case you broke the report, you can always go to the Advanced menu and select **Restore Default Reports**. It will only restore the default reports, not the reports that you have created .